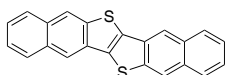


BTBT and DNTT

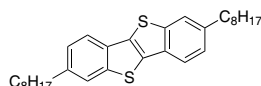
BTBT and DNTT derivatives have high hole mobility or high solubility for p-type organic semiconductors, BTBT and DNTT derivatives applications which includes organic photovoltaic cells (OPV), organic light emitting diodes (OLEDs), organic field-effect transistor (OFET) and organic thin film transistors (OTFTs).

BTBT & DNTT

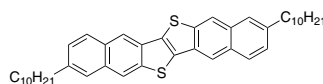
LT-S9031 DNTT
935280-42-5, Sublimed,>99%



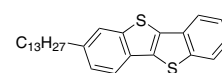
LT-S9054 C8-BTBT
583050-70-8, Sublimed,>99%



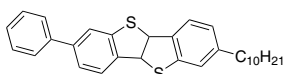
LT-S9055 C10-DNTT
1169932-40-4, Sublimed,>99%



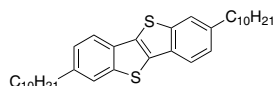
LT-S9541 C13-BTBT
1198290-20-8, Sublimed,>99%



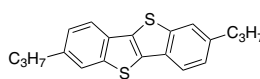
LT-S9587 Ph-BTBT-10
1398395-83-9, Sublimed,>99%



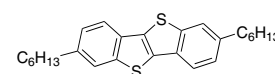
LT-S9592 C10-BTBT
583050-71-9, Sublimed,>99%



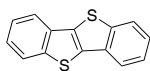
LT-S9593 C3-BTBT
1198290-38-8, Sublimed,>99%



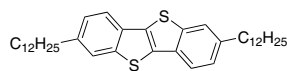
LT-S9594 C6-BTBT
583050-69-5, Sublimed,>99%



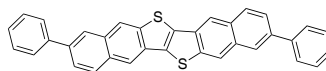
LT-S9595 BTBT
248-70-4, Sublimed,>99%



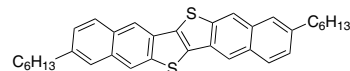
LT-S9596 C12-BTBT
473723-54-5, Sublimed,>99%



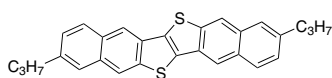
LT-S9597 DPh-DNTT
1310198-13-0, Sublimed,>99%



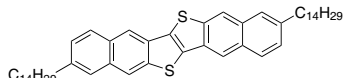
LT-S9598 C6-DNTT
1242239-89-9, Sublimed,>99%



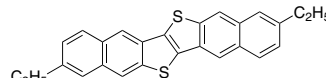
LT-S9599 C3-DNTT
1242239-91-3, Sublimed,>99%



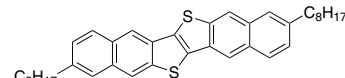
LT-S9600 C14-DNTT
Sublimed,>99%



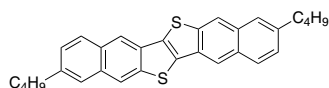
LT-S9601 C2-DNTT
Sublimed,>99%



LT-S9602 C8-DNTT
Sublimed,>99%



LT-S9603 C4-DNTT
Sublimed,>99%



Head Office: 31F-5, No. 99, Sec. 1, Xintai 5th Rd., Xizhi, New Taipei City 22175, Taiwan, R.O.C., TEL: +886-2-2697-5600, FAX: +886-2-2697-5601.
 Factory I: 2F, No. 17, R&D Road II, Science-Based Industrial Park, Hsin-Chu 30076, Taiwan, R.O.C., TEL: +886-3-666-3188, FAX: +886-3-666-9288.
 Factory II: 1F, No.9 Gongye E. 9th Rd., Hsinchu Science Park, Hsinchu 30075, Taiwan, R.O.C., TEL:+886-3-666-8800, FAX:+886-3-666-7058.
 總公司: 22175新北市汐止區新台五路一段99號31樓之5 ☎ 02-2697-5600 ☎ 02-2697-5601.
 新竹廠 I: 30076新竹科學工業園區研發二路17號2樓 ☎ 03-666-3188 ☎ 03-666-9288.
 新竹廠 II: 30075新竹科學工業園區工業東九路9號1樓 ☎ 03-666-8800 ☎ 03-666-7058.
 E-mail: sales@lumtec.com.tw; Web: www.lumtec.com.tw

